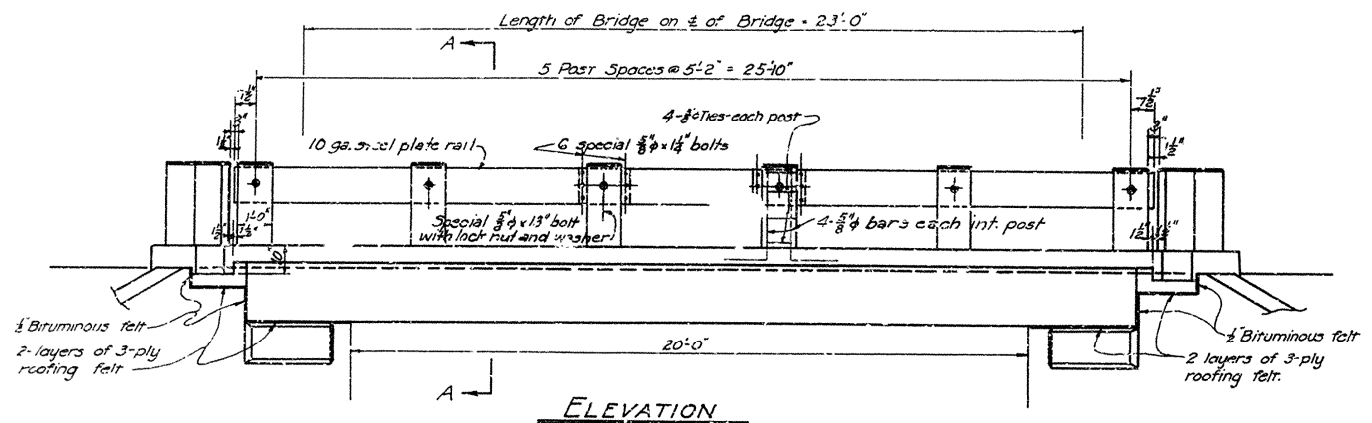
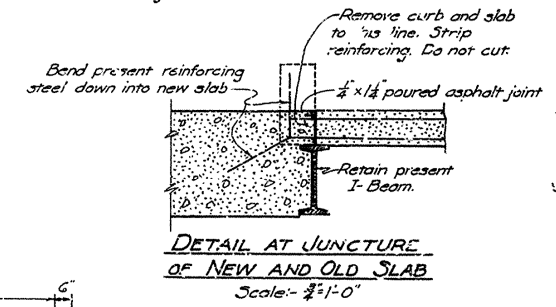


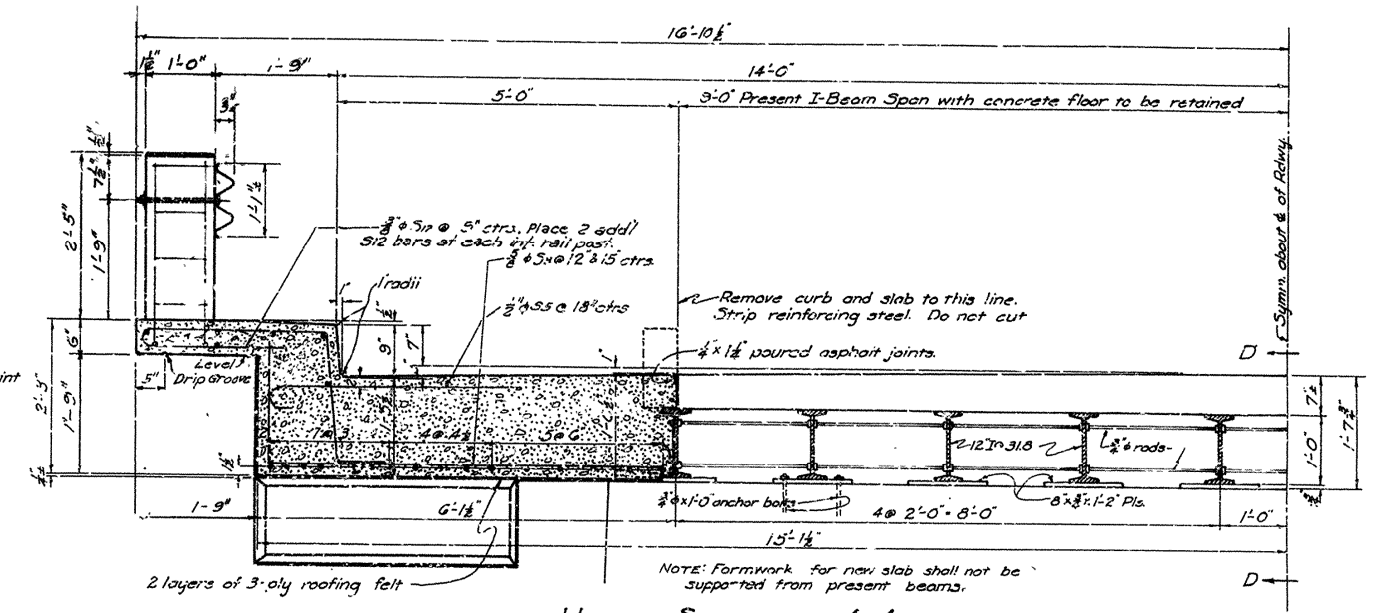
STATE	PROJECT NO.	FISCAL YEAR	SHEET NO.	TOTAL SHEETS
ARK.			8	21
STATE JOB NO 4275 1951				



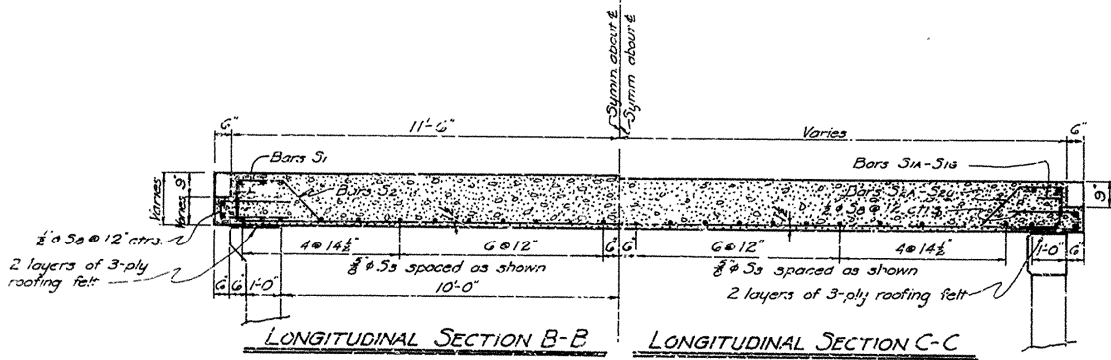
ELEVATION



DETAIL AT JUNCTURE OF NEW AND OLD SLAB  
Scale: 1/2" = 1'-0"

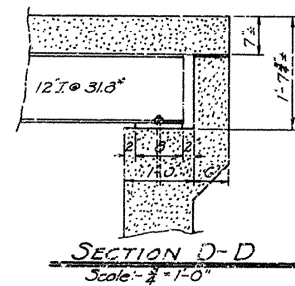


HALF SECTION A-A  
Scale: 1/2" = 1'-0"

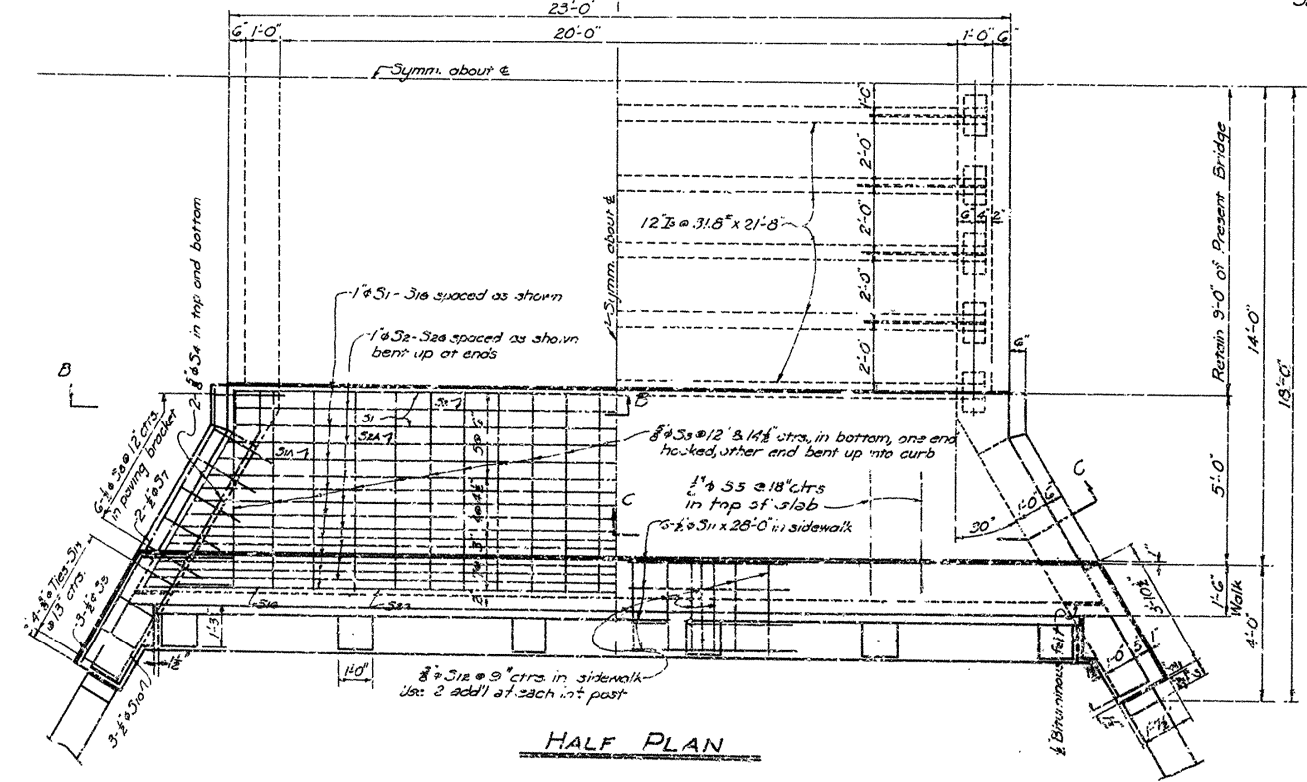


LONGITUDINAL SECTION B-B

LONGITUDINAL SECTION C-C



SECTION D-D  
Scale: 1/2" = 1'-0"



HALF PLAN

GENERAL NOTES

All concrete to be Class 5. All exposed corners to have 1/4" chamfers otherwise noted.  
Reinforcing steel to be deformed bars of structural or intermediate grade. Shop lists and bending diagrams must be submitted and approved before fabrication is begun.  
Payment for poured asphalt joint, roofing felt, and bituminous felt is to be included in unit price bid for Class 5 Concrete.  
Dimensions relative to present structure are general only. Detailed dimensions are to be secured and verified in the field before bar lists for reinforcing are made and construction is begun.  
Payment for cutting off old concrete curbs and portion of slab; cutting off present steel handrail; cleaning and painting old structural steel; shall be included in Lump Sum bid for Remodeling of Existing Bridges.  
Payment for slab bar bolsters and high chairs shall be considered subsidiary to the item "reinforcing steel."  
SPECIFICATIONS: Arkansas State Highway Commission Standard Specifications for Road and Bridge Construction, adopted March 1, 1940.  
The steel plate guard rail shall be of the type shown or an equivalent rigid type as approved by the Engineer, and shall be painted the same as structural steel under Section 807. Guard rail, including posts, reinforcing steel and fastenings shall be paid for at the unit price per linear foot bid for "Steel Plate Guard Rail."

DESIGN LIVE LOAD-H-20 LOADING A.S.H.O. 1941

Load distribution to sidewalk girder: Dead Load 770/l.in.ft.  
Live Load 0.30 Wheels 30% impact  
Load distribution to roadway slab: Dead Load 235/l.in.ft.  
Live Load 2167 Wheels 30% Impact

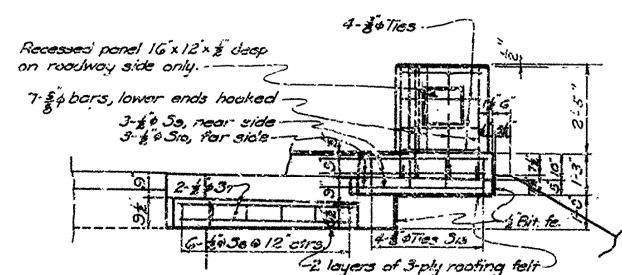
UNIT STRESSES

Class 5 Concrete (n=10)	1,000 %
Reinforcing Steel	18,000 %
Structural Steel (old)	18,000 %

SLAB BAR LIST

MARK	SIZE	NO	REQD	LENGTH	A	B	BENDING DIAGRAM
51	1"	4	25'-6"	22'-3"			51, 51A-51B
51A	1"	2	26'-5"	23'-7"			
51B	1"	2	27'-5"	24'-7"			
51C	1"	2	28'-5"	25'-5"			
51D	1"	2	29'-0"	26'-2"			
51E	1"	2	29'-7"	26'-9"			
51F	1"	2	30'-2"	27'-4"			
51G	1"	2	30'-5"	27'-11"			
52	1"	2	25'-5"	17'-10"			
52A	1"	2	25'-7"	18'-2"			
52B	1"	2	26'-5"	19'-4"			
52C	1"	2	27'-7"	20'-8"			
52D	1"	2	28'-5"	21'-0"			
52E	1"	2	29'-0"	21'-7"			
52F	1"	2	29'-7"	22'-2"			
52G	1"	2	30'-2"	22'-9"			
53	1"	44	8'-2"				
54	1"	16	6'-6"	5'-4"	1'-2"		
55	1"	36	4'-0"				
56	1"	8	5'-2"	4'-0"	1'-2"		
57	1"	8	5'-2"	4'-0"	1'-2"		
58	1"	24	4'-5"	2'-0"	0'-5"		
59	1"	12	6'-0"	3'-6"	2'-6"		
60	1"	12	5'-0"	3'-4"	1'-8"		
61	1"	12	23'-0"	23'-0"	23'-0"		
62	1"	100	6'-7"				
63	1"	16	4'-10"				

NOT: Dimensions relating to reinforcing steel are to center of bars.



DETAIL OF RIGHT HAND TURNOUTS

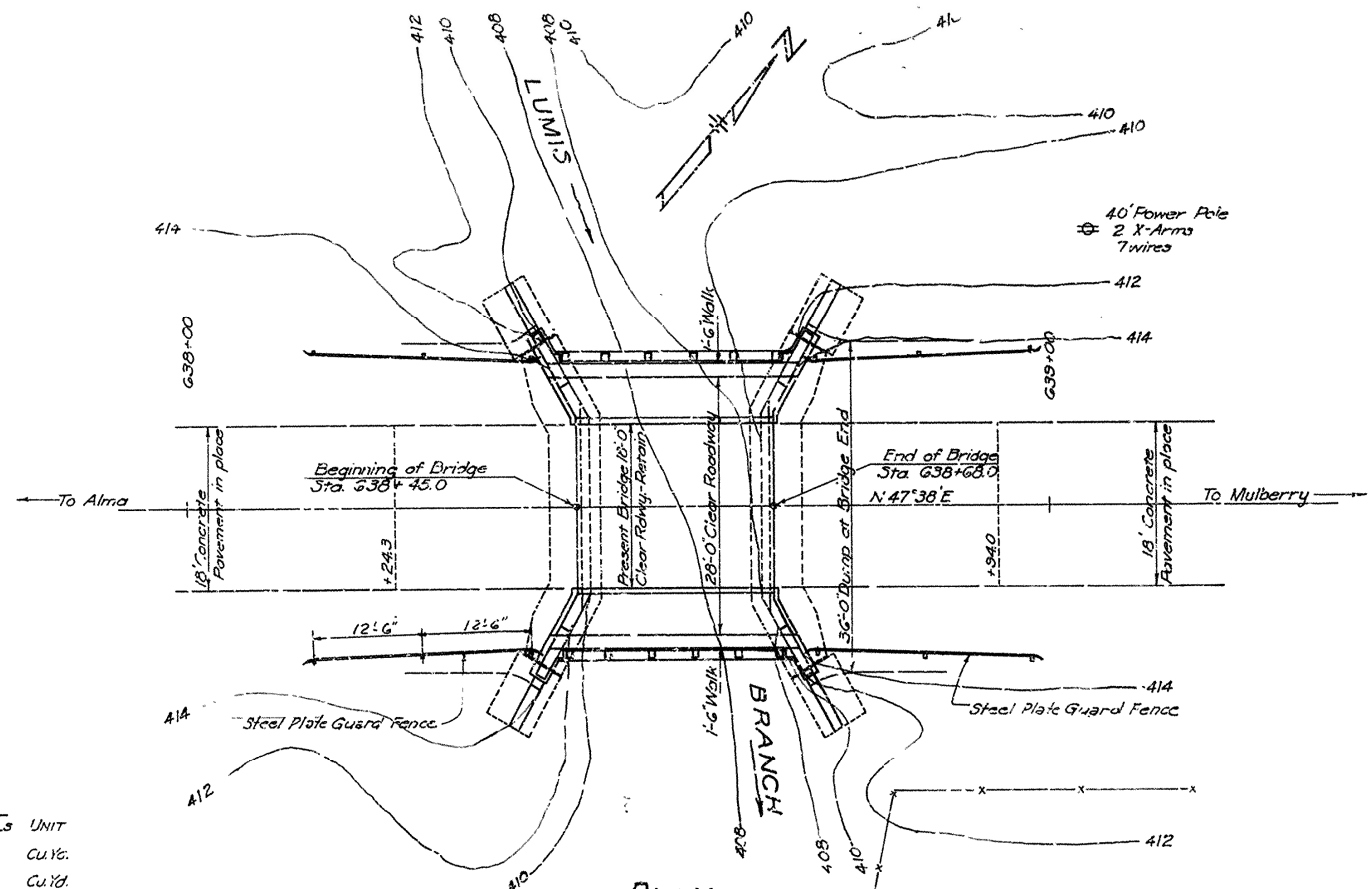
Details of left hand turnouts are similar.

Revisions: Handrail and Curb Section - 11-2-29-51

DETAILS OF WIDENING SUPERSTRUCTURE  
BRIDGE No. 2283  
ALMA-MULBERRY ROAD  
CRAWFORD COUNTY  
ROUTE 64 SEC. 2

ARKANSAS STATE HIGHWAY COMMISSION  
LITTLE ROCK, ARK.

Drawn By: WCH Date: 3-25-42  
Traced By: MMH Date: 3-21-42  
Checked By: Date:  
BRIDGE NO. 2283 DRAWING NO. 7942



**GENERAL NOTES FOR BRIDGE No. 2283**

Dimensions relative to present structure are general only. Detailed dimensions are to be secured and verified in field before construction is begun and before shop drawings of reinforcing steel are made.

All concrete to be poured in the dry. All exposed corners to be chamfered  $\frac{3}{8}$  unless otherwise noted.

Rock excavation shall be made to neat lines of concrete footings. Care shall be exercised to avoid shattering of rock faces by excessive blasting.

In general all construction joints in new work of abutments shall be horizontal and shall be provided with keys not less than 2" deep and covering the middle third of both dimensions.

Reinforcing steel to be deformed bars of structural or intermediate grade. Shop lists and bending diagrams must be submitted and approved before fabrication is begun.

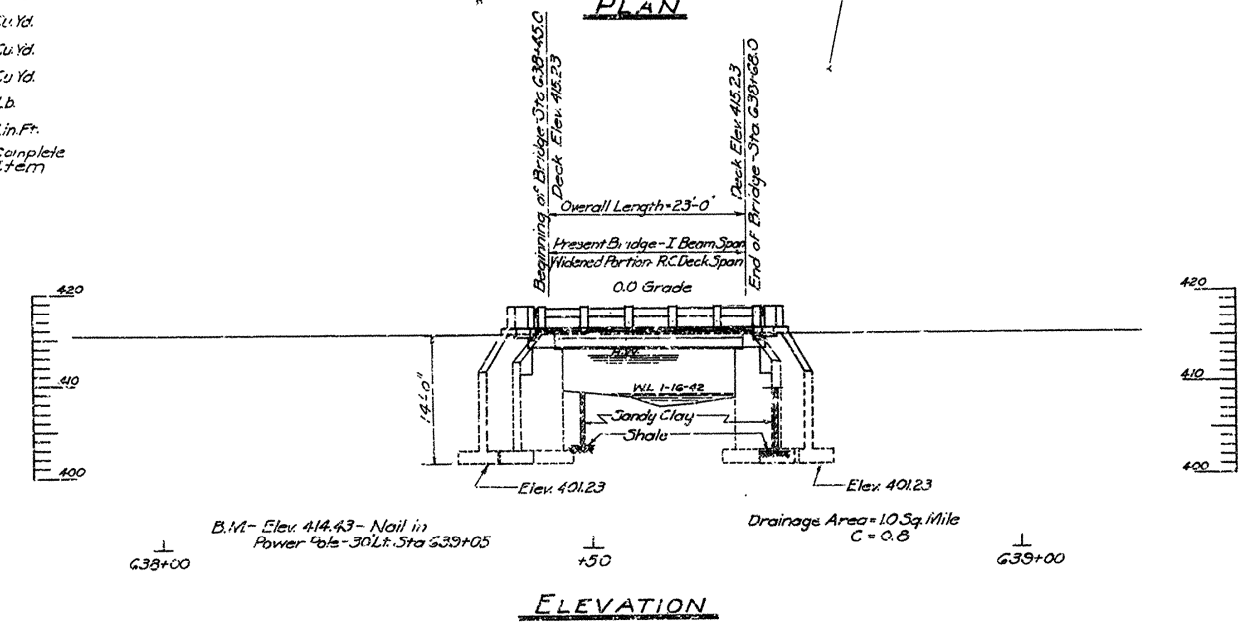
For details of Abutments No. 1 & 2 of Bridge No. 2283, see Drawing No. 7941.

For details of Superstructure of Bridge No. 2283, see Drawing No. 7942.

Specifications: Arkansas State Highway Commission Standard Specifications for Road and Bridge Construction, adopted March 1, 1940.

**QUANTITIES FOR BRIDGE No. 2283**

ITEM NO.	ITEM	QUANTITY			TOTALS	UNIT
		ABUT. No. 1	SPAN	ABUT. No. 2		
105	Dry Excavation for Structures	34	—	34	68	Cu.Yd.
103	Wet Excavation for Structures	3.5	—	40	7.3	Cu.Yd.
103	Solid Rock Excav. for Structures	9	—	6	15	Cu.Yd.
SR&B02	Class A Concrete for Bridges	11.35	—	11.35	23.9	Cu.Yd.
SP&B02	Class B Concrete for Bridges	—	21.9	—	21.9	Cu.Yd.
808	Reinforcing Steel	94.5	381.0	94.5	570.0	Lb.
#05-3	Steel Plate Guard Rail	—	66.7	—	66.7	lin.Ft.
SP	Remodeling Existing Bridges and Maintaining Traffic	—	—	—	16%	Complete Item



**LAYOUT**  
**BRIDGE OVER LUMIS BRANCH**  
**ALMA-MULBERRY ROAD**  
**CRAWFORD COUNTY**  
**ROUTE 64 SEC. 2**

**ARKANSAS STATE HIGHWAY COMMISSION**  
**LITTLE ROCK, ARK.**

Drawn By: *M.W.H.* Date: *2-13-42*  
Traced By: *M.W.H.* Date: *2-18-42*  
Checked By: \_\_\_\_\_ Date: \_\_\_\_\_

Scale: 1 in. = 10'-0"

**BRIDGE No. 2283** **DRAWING NO. 7940**

Revisions: Ailing; Quantities, H.B. 3-30-51

*M.W.H.*  
**Principal Highway Engineer (Bridges)**